

Not all Charge Air Coolers are created equal!

➤ When determining which brand of charge air cooler to buy...
Be sure you are comparing apples to apples!

For Example
Part #222223
Fitting many
Kenworth/Peterbilt
Applications.



“THE OTHER GUYS”

CORE CONSTRUCTION

	<p>Extruded micro-fin END tubes provide strength where needed with the best heat transfer of any extruded tube.</p> <p>OE style stuffed fin CENTER tubes tubulates hot air for maximum heat transfer.</p>	<p>VS</p>	<p>Extruded smooth tubes offer strength, but provide almost no heat transfer.</p>
--	---	------------------	--

FIN DESIGN AND QUALITY

<p>.2 mm fin thickness for added strength from road debris.</p> <p>12.5 mm fin height for better clog resistance and more air flow to the radiator behind it.</p>	<p>VS</p>	<p>.1 mm fin thickness bends and clogs with the slightest touch.</p> <p>9.8 mm fin height, smaller opening clogs easier.</p>
---	------------------	--

TUBE CONFIGURATION

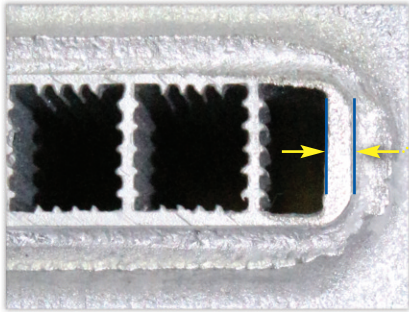
<p>Curved tube face for better aerodynamics.</p>	<p>VS</p>	<p>Flat tube face restricts air flow decreasing fuel efficiency.</p>
---	------------------	---

For Example
Part #222223
Fitting many
Kenworth/Peterbilt
Applications.



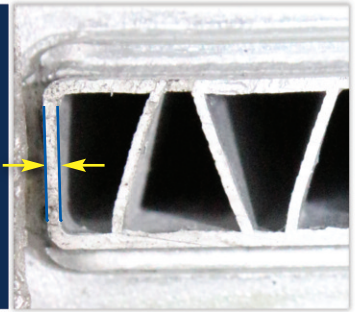
“THE OTHER GUYS”

NEEDED STRENGTH



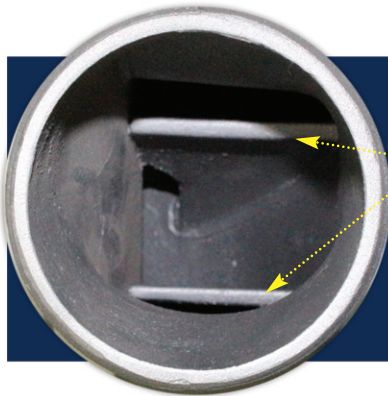
Thick 1.3 mm tube face on every tube for extra strength and impact resistance from road debris.

VS



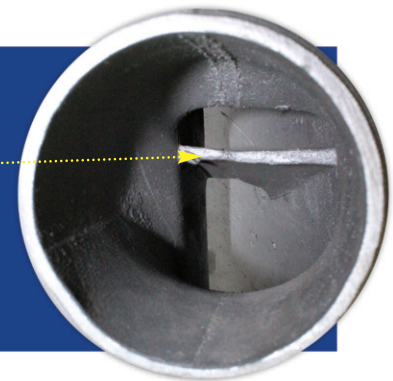
Thin .65 mm tube face dents and punctures easily.

AIR FLOW



2 Air diverting vanes in the tank for balanced air flow throughout the entire core.

VS



1 Air diverting vane in the tank results in uneven pressure and flow forming hot and cold spots.



»»» When you want quality and dependability, you want Northern Radiator! «««